



DIN 17.5mm

Features :

- 3Ø - 3 Wire input
- Monitors Phase Sequence, Phase Failure, Phase Asymmetry, Under Voltage and Over Voltage
- LED Indication : Healthy and Trip conditions
- Slim and Space saving design
- DIN Rail Mount, Wall Mount

Certification : **Display specifications**

Type	Analog
No of LED	3
No of knob	1

LED indication chart

Conditions	LED 1	LED 2	LED 3
Healthy	ON	ON	ON
Below operating range	OFF	OFF	OFF
R phase Loss	OFF	ON	ON
Y phase Loss	ON	OFF	ON
B phase Loss	ON	ON	OFF
Phase Sequence	Blink every 1sec	Blink every 1sec	Blink every 1sec
Phase Asymmetry	Blink every 1sec	ON	ON
Under Voltage	ON	Blink every 1sec	ON
Over Voltage	ON	ON	Blink every 1sec

Input specifications

Operating voltage range	154 – 520V AC
Nominal voltage	415V AC (L-L)
VA rating	<20VA
Frequency	50/60Hz
Hysteresis	Voltage 6V (For Under voltage, Over voltage, Phase asymmetry)
Voltage accuracy	±1% of full range
Time accuracy	Time accuracy: ±5% of set value
Pot setting	0 - 10 sec (For Phase asymmetry, over-voltage and under-voltage)

Dip Switch Setting

Parameter	ON	OFF
SW1	Phase Asymmetry 65V	Phase Asymmetry 40V
SW2	SPP	PSR
SW3	Under Voltage, Over voltage=ON	Under Voltage, Over voltage =OFF

Trip Time Settings

Power ON delay	<400 msec
Trip Time Delay	2 to 10 sec
Recovery Time	<250 msec
Response Time	<250 msec

Functional Specifications

Network Selection	Default : 3P3W
Under Voltage	Default : OFF, Value : 310V
Over Voltage	Default : OFF, Value : 500V
Phase Asymmetry	Default : ON
Phase Failure	Default : ON
Phase Sequence	Default : ON

Output specifications

Total number of relays	1
Type of relay	1 SPDT Relay (1 C/O)
Relay contact rating	NO : 5A@250V AC / 30VDC (Resistive) NC : 5A@250V AC / 30VDC (Resistive)
Electrical endurance	Z type : 5 x 10 ⁴
Mechanical endurance	10 ⁴ 7 (10000000)

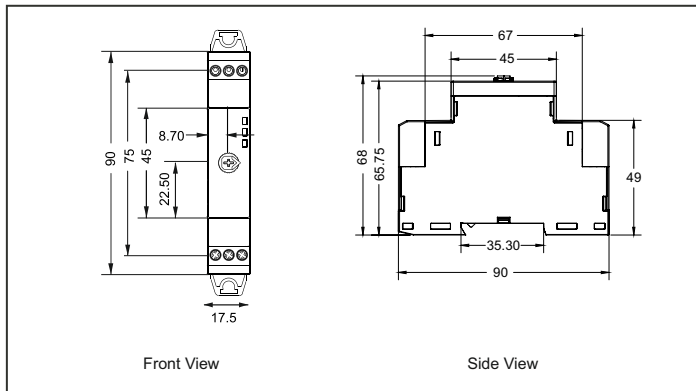
Environmental specifications

Operating temperature	0°C to 50°C
Storage temperature	-20°C to 70°C
Relative humidity (non condensing)	Up to 95% RH
Degree of protection	IP20 for Terminals IP50 for Enclosure
Degree of pollution	
For product	III
For PCB	II

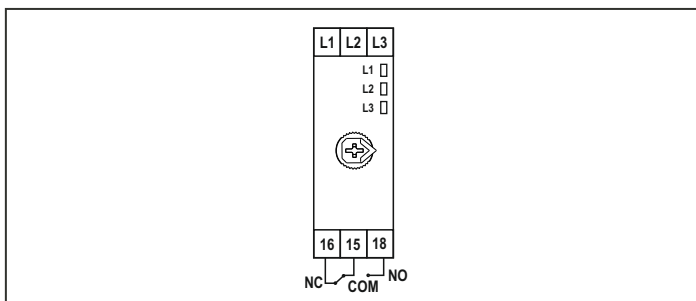
Mechanical specifications

Mounting	DIN rail, Wall mount
Weight	70gms
Screw tightening torque	0.5NM

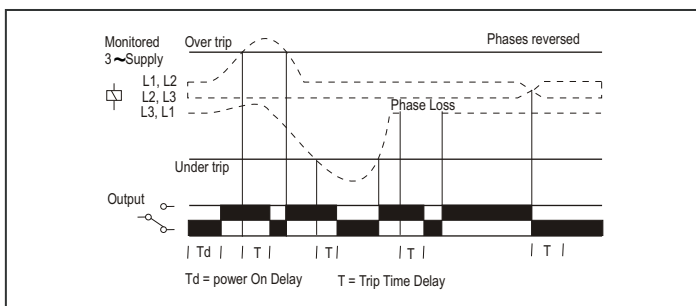
Dimensions (All are in mm)



Terminal connections



Timing diagram



Compliance

Applicable EMC standards

Product standard - IEC 60255-1/IEC 60947-5-1

Category	Reference standards
Electrostatic discharge	IEC 61000-4-2
Electrical fast transient / Burst	IEC 61000-4-4
Electromagnetic field	IEC 61000-4-3
Surge	IEC 61000-4-5
Conducted RF	IEC 61000-4-6
Rated power frequency	IEC 61000-4-8
Voltage dip / Short interruptions	IEC 61000-4-11
Conducted emissions	CISPR-22
Radiated emissions	CISPR-11

Ordering information

Product code	Supply voltage	Certification
640PSR-V-CE	154 to 520V AC	CE